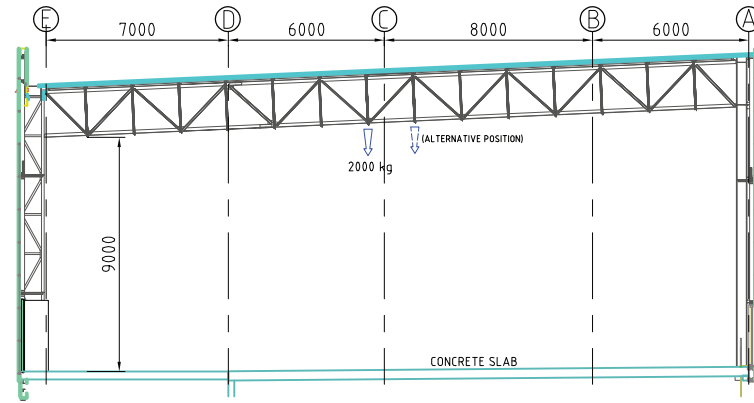
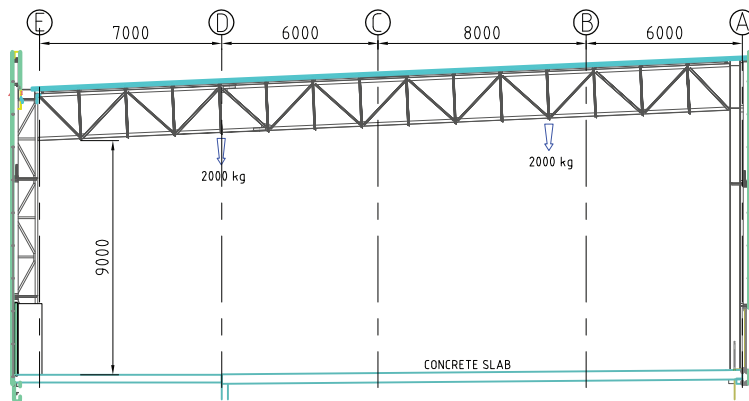


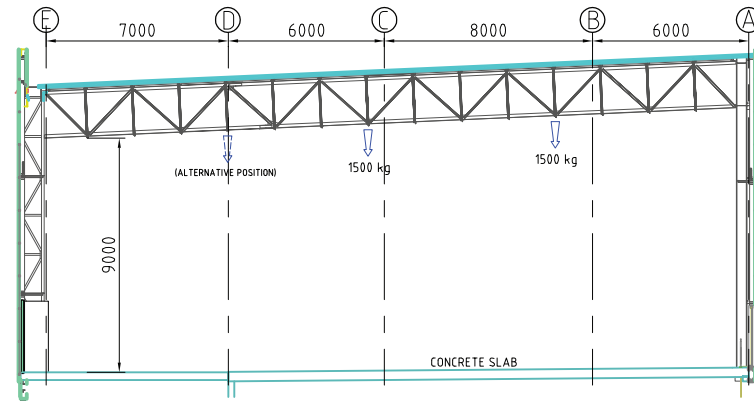
UNIFORMLY DISTRIBUTED LOADS



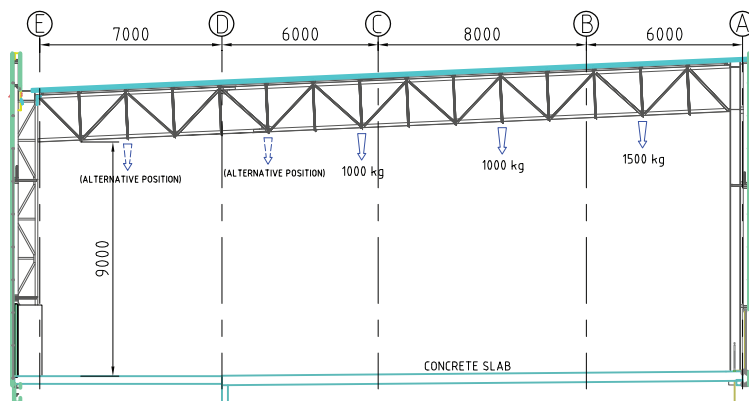
POINT LOAD @ MIDSPAN



POINT LOADS @ QUARTER-SPAN



POINT LOADS @ MIDSPAN + QUARTER-SPAN



POINT LOAD @ MIDSPAN + ADDITIONAL LOADS

NOTE:

1. RIGGING SHOULD ONLY BE ATTACHED AT TRUSS NODES
2. LOADS SHOWN ARE ALLOWABLE (UNFACTORED)

